

Integrated Development Environment Sysmac Studio



Minimize time to market
Reduce installation cost
Boost productivity



Sysmac Studio
**Your Automation
Companion**

In changing market the customization and multiple variations of a machine or concept make the difference between success and failure. The task of designing, commissioning and maintaining machines is shifting from single person task to decentralized teams requiring coordination. A **proper version control system** is essential in order to keep control of all project changes and product variations.

Integrated Development Environment

Sysmac Studio is the Integrated Development Environment designed to be your automation companion for your machine's or system's entire lifecycle.

Future automation systems will be more intelligent and interconnected, consequently engineering and maintenance costs will increase unless modern and appropriate software tools are used during the design, commissioning and maintenance stages. Sysmac Studio is a unique environment that integrates logic, motion and drives, robotics, safety, visualization, sensing and information technologies in a single project, thus reducing the learning curve and the intra-operative software costs. Team working, and integrated simulation are the key elements that make Sysmac Studio not only a development studio but a real productivity tool. One software to get things done.

DESIGN



Minimize time to market

Engineering time and costs are penalizing during the design stage. The integration of multiple disciplines and efficient team cooperation will dramatically contribute to reducing the time to market.

COMMISSIONING



Reduce installation costs

Using the right software tools will certainly minimize commissioning mistakes as well as costs. Get things done in shorter time.

PRODUCTION



Boost Productivity

Vertical integration of Overall Equipment Effectiveness data and easy maintenance is essential in improving production results and machine uptime.



DESIGN

Systems are evolving into more modular designs where hardware and code become components that can be easily incorporated and maintained.



Minimize time to market

One software to integrate

- Sysmac Studio integrates logic control, safety, motion & drives, robotics, HMI, I/Os, Vision, advanced sensing and information systems in a single environment. It saves time and money by reducing learning curve and software integration efforts.
- Sysmac Studio is a powerful development environment that aims to be flexible enough.

Work as a team

- Coordinated development in large decentralized teams is possible. Sysmac Studio integrates a unique graphic interface with a GIT version control system. Take full control of your code and variations and take advantage of the most popular version control software (GIT) and its possibilities for team working, not only during the design phase but also the commissioning and operation phases.

Simulation

- Sysmac Logic, Motion, Robotics, Safety, HMI, Vision... Simulation is a standard feature of the Studio. Control System development can be started in parallel or even before electrical or mechanic implementation. When virtualization of machine physics is required MATLAB(R) SIMULINK can be connected in order to achieve the most accurate simulations.

Modular design

- Sysmac Studio library system, Intelligent Application Gadgets (HMI faceplates), and Flexible EtherCAT configurations are some of the included features.



COMMISSIONING

PRODUCTION



Reduce installation costs

Integrated commissioning tools

- The most advanced commissioning tools are embedded in Sysmac Studio: Drive tools with advanced but easy tuning algorithms, back-up and restore functions, distributed teamwork support and version control, high resolution monitor trends, visual CAM table editor, Network configuration, etc..

Sysmac troubleshooter

- Sysmac Studio troubleshooter handles not only Sysmac Controller but complete Sysmac device troubleshooting in a single reporting system. Commissioning time is dramatically reduced as any Controller, Network, or Slave problem will be detected with all suitable information available for you to control.

Multiple configurations

- Sysmac Studio supports GIT as a distributed version control system which will allow commissioning teams to easily synchronize and keep versions updated. Moreover Sysmac Studio implements derived devices that allow it to handle multiple EtherCAT configurations in the same project.

Multi-user

- Different co-workers, and even subcontractors can work in parallel during the commissioning stage, thus reducing development time and costs.



Boost Productivity

Information systems

- In the era of The Internet of Things, information and automation systems converge. Sysmac Studio allows you to handle OEE data by means of vertical and horizontal integration following open standards like OPC-UA, EtherNet/IP, EtherCAT or PackML Direct.

Improve machine uptime

- Database connection is easily achieved by the SQL FB Library.
- Advanced troubleshooter function and dedicated predictive maintenance significantly improve machine uptime and machine availability.

Open Standards

- Sysmac aims to be an open system and Sysmac Studio supports the most popular automation standards and trends: IEC-61131-3 programming, PLCopen, SECS-GEM, OPC-UA, EtherNet/IP, EtherCAT, SQL, FTP, GIT, etc. and is always able to be aligned with the latest technologies.

Convert complex into simple

- Sysmac Studio is a powerful engineering tool, but aims to maintain a friendly and easy to use interface. Reduce your maintenance teams' learning curve, and convert complex tasks into simple ones.

One software to get things done...

Sysmac Studio is one of the most featured automation IDEs and allows handle the complete machine including: Information handling, Visualization, Networking, Logic, Motion, Safety, Vision, Robotics, CNC and I/O. One intuitive IDE contains all the necessary elements to program, commission and maintain Sysmac applications. Sysmac Studio editors are designed to be user-friendly, like traditional "PLC" software.

- ✓ **One project** to integrate all Sysmac Devices.
- ✓ **One intuitive** and fully featured IDE.
- ✓ **One software** to transform complex into simple.
- ✓ **Open standards**



Microsoft SQL Server OPC UA

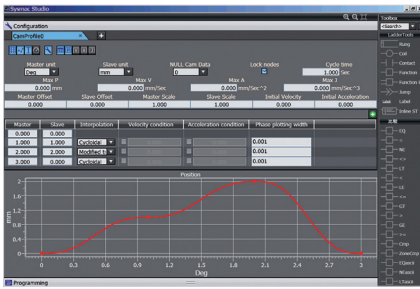
Logic

- Fully scalable with your machine
- Reuse your developed code
- Protect your investment and assets

SCALABILITY



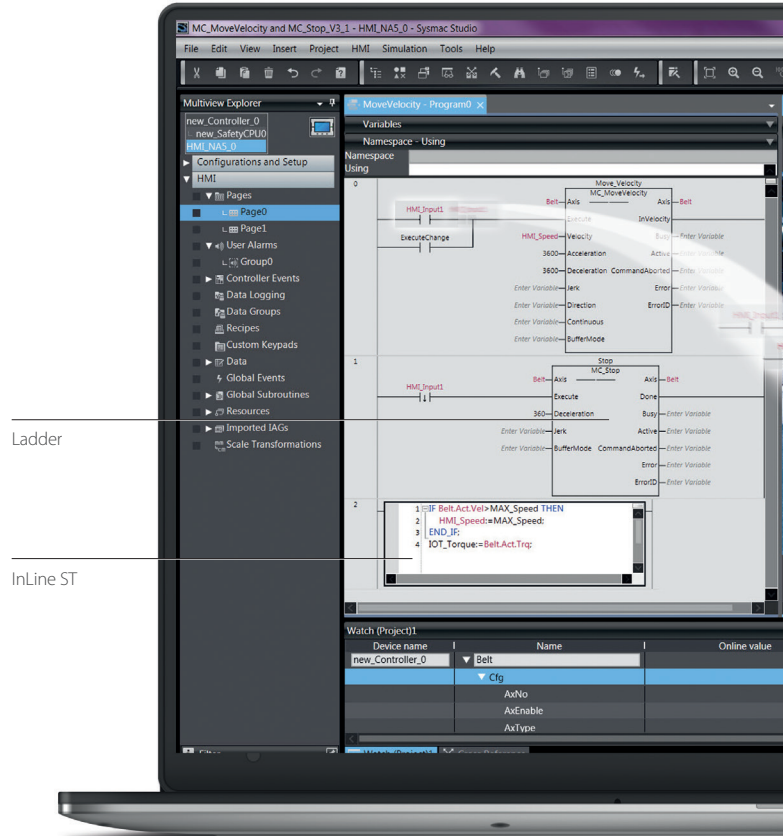
Sysmac Studio at a glance



Rich CAM editor

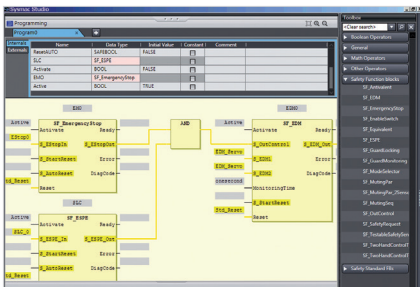
MOTION PROGRAMMING

- More than **50 PLCopen and Property Motion FB's** available in controller to develop single, synchronous and coordinated motion applications.
- **Rich graphic cam editor** including multiple interpolation methods as standard.
- All the necessary **drive tools** for drive maintenance and commissioning as standard: single and multi axis tuning, mechanical analysis, parameter handing, etc.



Ladder

InLine ST

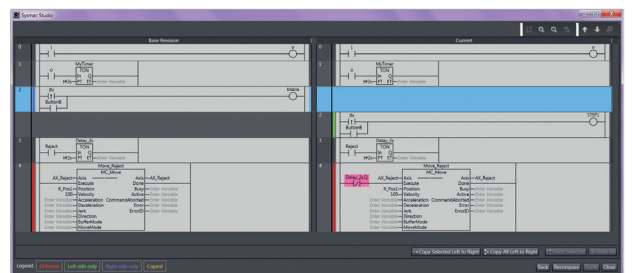


INTEGRATED SAFETY

- Dedicated FBD diagram and GUI interfaces are designed in order to **help commissioning and programming**.
- **Mapping hardware** variables and sharing EtherCAT variables between the Safety Control System and the Standard Controller is easy in the Sysmac Studio environment.
- All the necessary **printable reports** are generated from the Studio.

MULTI-USER ENVIRONMENT

- Co-develop in parallel in **local** or **remote** teams.
- Keep all machines easily **aligned to the correct version**.
- **Handle machine variations** and customizations efficiently.
- Take advantage of **GIT's open source** community





Intelligent Application Gadgets

HMI INTEGRATION

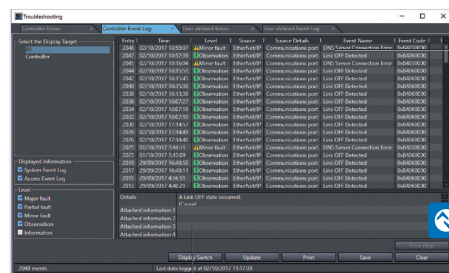
- **Reduce development costs** and maintenance time by combining NA HMI with Sysmac.
- **Include videos and PDF files** that will improve machine operation and maintenance. Make your machines more intuitive and productive
- **Enhanced editor's functionality** and version control features included in Autumn 2017 release will help to reduce the total cost of ownership.

INTEGRATED VISION AND SIMULATION

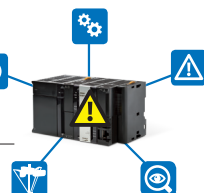
- Commissioning and programming vision devices is as easy as **dragging and dropping** other well known OMRON algorithms.
- Sysmac Studio **integrates Sysmac Vision** devices like FH and allows you to import the necessary video staff from cameras to properly simulate and program the vision application in the same tool and project as the other Sysmac components.

ONE MACHINE TROUBLESHOOTING

- **Sysmac Concept is not only a controller** but a whole architecture integrating controllers, actuators, devices, advanced sensors, HMIs etc.

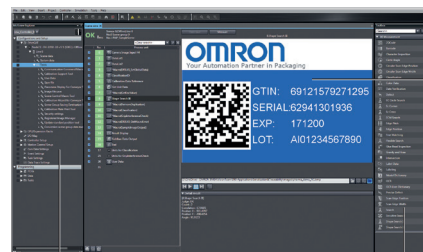


Sysmac troubleshooting alert



Alarm handling and possible remedy

Warning or fault occurs in any OMRON device



Live image

Access all the configuration of FH

Set of more than 100 tools

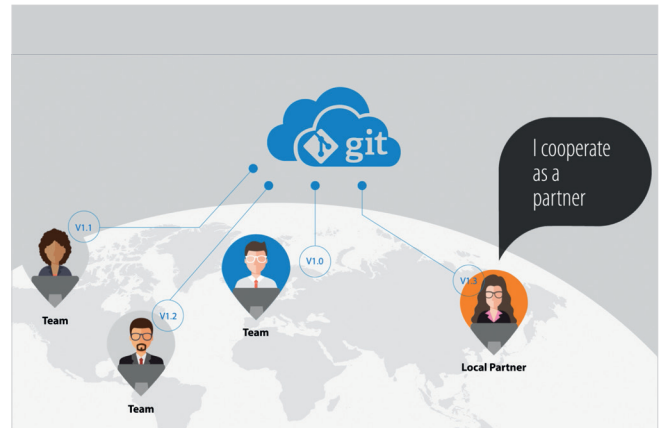
Sysmac Studio News

Team Edition option

Work as a team and boost productivity!

Sysmac Studio provides rich integration with the most popularly distributed control system (GIT) providing you full control of the project variations and enabling distributed coworker development.

Geographically distributed teams can work on the same project using local or web based servers. Thanks to the distributed control version system all project changes are fully traceable , Who? When? Why? a project was modified will always be clear.



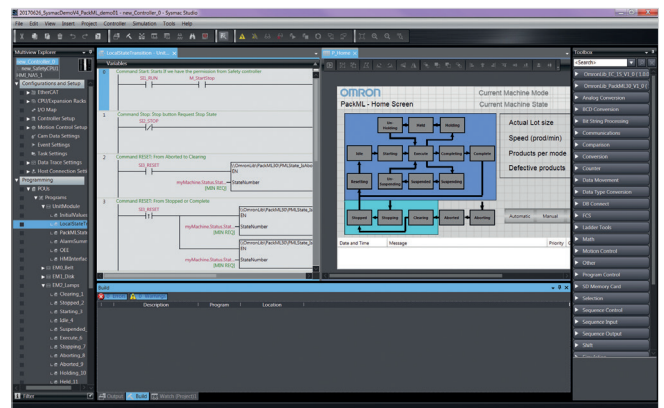
Collaborative engineering with a distributed team

Improved HMI Integration

Develop faster!

Improved integration and functionality in order to reduce development time.

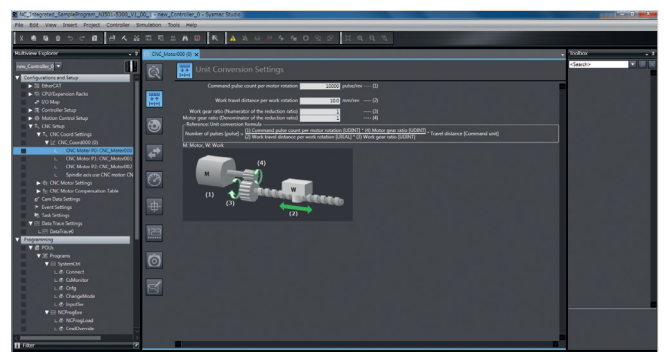
Controller and HMI displays can be developed in parallel and in a very natural way. Drag'n'drop between Controller and HMI to create objects and HMI variables. Execute Controller and HMI simulation side by side.



CNC Integration

Simplifies machine setup!

Function Blocks for Numerical Control make program structure simple, even for synchronization between CNC processes and others.



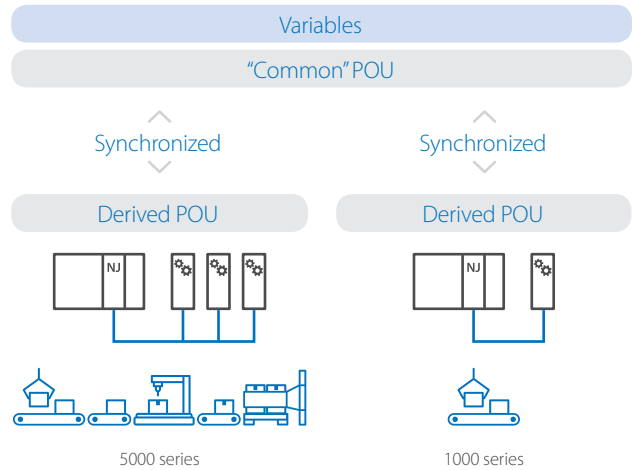
Numerical Control axis setting wizard

Multiple Configurations

Reduce commissioning time!

Let Sysmac Studio maintain, update and synchronise your small machine variations.

Variations in field devices can be easily handled thanks to Derived Multiple Configurations. Changes in master code will be automatically propagated to Derived configurations, thus reducing commissioning and code maintenance time.



Sysmac Studio WEB

Online Demo

- ✓ Experience Sysmac Studio in an online demo.
- ✓ Unrestricted access to all the features in a virtual environment.
- ✓ No need to download or install the software.



industrial.omron.eu/en/misc/forms/sysmac-studio-online-demo



Schedule an online demo with an Omron engineer



Quick Tip videos for Sysmac Studio for informal learning



Sysmac Studio Licenses

Standard Edition

- Provides all the necessary features to program and set up the Sysmac system.
- No extra cost for components.

Lite Edition

- All features and devices supported by the standard edition.
- Limited to the NJ1 And NX1 controllers.

Options

Team Edition

- Version Control and Cooperative Development includes multi-user and GIT version control features.

Sysmac Library

- Free online software library lets licensed Sysmac Studio users download Function Blocks for multiple applications for different industries.



industrial.omron.eu/en/products/sysmac-studio

As Standard (Standard Edition/Lite Edition)			Options
Information (SQL Connection, Networks Configuration)	Visualization (HMI)	Logic (Logic programming)	Team Edition
Motion (Motion programming, CAM editor, Drive Tools)	Safety	Vision	Sysmac Libraries (Application Libraries)
Simulation	Robotics	CNC	

Would you like to know more?

OMRON EUROPE B.V.

+31 (0) 23 568 13 00

industrial.omron.eu

Sales & Support Offices

Austria

Tel: +43 (0) 2236 377 800
industrial.omron.at

Belgium

Tel: +32 (0) 2 466 24 80
industrial.omron.be

Czech Republic

Tel: +420 234 602 602
industrial.omron.cz

Denmark

Tel: +45 43 44 00 11
industrial.omron.dk

Finland

Tel: +358 (0) 207 464 200
industrial.omron.fi

France

Tel: +33 (0) 1 56 63 70 00
industrial.omron.fr

Germany

Tel: +49 (0) 2173 680 00
industrial.omron.de

Hungary

Tel: +36 1 399 30 50
industrial.omron.hu

Italy

Tel: +39 02 326 81
industrial.omron.it

Netherlands

Tel: +31 (0) 23 568 11 00
industrial.omron.nl

Norway

Tel: +47 22 65 75 00
industrial.omron.no

Poland

Tel: +48 22 458 66 66
industrial.omron.pl

Portugal

Tel: +351 21 942 94 00
industrial.omron.pt

Russia

Tel: +7 495 648 94 50
industrial.omron.ru

South Africa

Tel: +27 (0)11 579 2600
industrial.omron.co.za

Spain

Tel: +34 902 100 221
industrial.omron.es

Sweden

Tel: +46 (0) 8 632 35 00
industrial.omron.se

Switzerland

Tel: +41 (0) 41 748 13 13
industrial.omron.ch

Turkey

Tel: +90 (216) 556 51 30
industrial.omron.com.tr

United Kingdom

Tel: +44 (0) 1908 258 258
industrial.omron.co.uk

More Omron representatives

industrial.omron.eu